

EMC Filters for AC Power Line

Inlet-socket Type ZUB.U-22, ZUB.D-22 Series

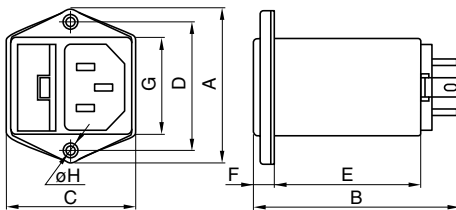
FEATURES

- Either single fuse filters(U type) or double fuse filters(D type).
- Internal fuse simplifies maintenance(Without spare fuse).
- Leakage current is maintained below 0.01mA.
- Uses Faston® #250 output terminals, simplifying handling and maintenance, and permitting soldering.
- It is a product conforming to RoHS directive.

APPLICATIONS

Computer terminals, various types of office automation equipment, digital devices(ECRs, etc.), measurement equipment, medical equipment, etc.

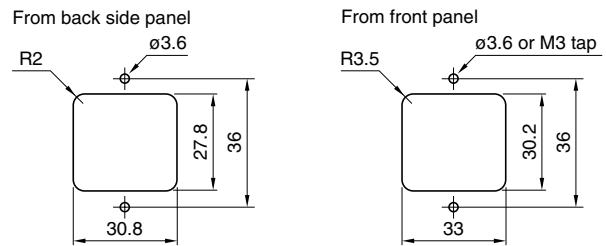
SHAPES AND DIMENSIONS



SAFETY STANDARDS

Part No.	Standard and standard No.		
	U.S.A.	Canada	Europe
	UL(NRTL)	CSA	NEMKO
	UL1283	CSA C22.2 No.8	EN60939
ZUB22XXU-22	1061287	LR76849C	P08209030
ZUB22XXD-22	1061287	LR76849C	P08209030

Typical dimensions for installation



- Tighten the panel mounting M3 dia. bolt with the torque under 5.88X10⁻¹N • m.

Series	A	B	C	D	E	F	G	øH
ZUB-U-22	44	59	37	36	41	6	27	3.5
ZUB-D-22	44	68	37	36	41	15	27	3.5

- Case:metal, input terminal:inlet-socket(EN60320), output terminal: Faston® #250(t:0.8mm)

ELECTRICAL CHARACTERISTICS

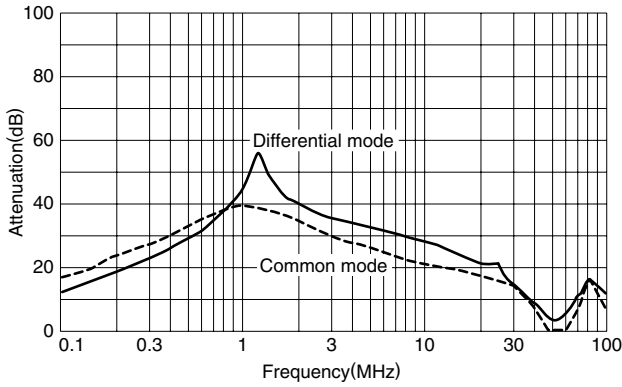
Part No.	ZUB2203U-22	ZUB2206U-22	ZUB2210U-22
Rated voltage Eac (V)	250	250	250
Rated current (A)	3	6	10
Test voltage Eac (V) [Between terminal and ground terminal]	1500	1500	1500
Insulation resistance (MΩ) [DC.500V, 1min/between terminal and ground terminal]	100min.	100min.	100min.
Leakage current (mA) [250V • 60Hz]	0.01max.	0.01max.	0.01max.
DC resistance (mΩ)	150max.	100max.	70max.
Operating temperature range (°C)[Including self-temperature rise]	-25 to +85	-25 to +85	-25 to +85
With derating over(°C)	55	55	55
Temperature rise (°C)	30max.	30max.	30max.
Attenuation frequency range (MHz) [+5 to +35° C]	Differential mode 0.6 to 8[20dB]	0.6 to 10[20dB]	0.6 to 10[15dB]
	Common mode 0.4 to 8[20dB]	0.8 to 4[20dB]	1 to 20[10dB]
Weight (g)	71	71	71

Part No.	ZUB2203D-22	ZUB2206D-22	ZUB2210D-22
Rated voltage Eac (V)	250	250	250
Rated current (A)	3	6	10
Test voltage Eac (V) [Between terminal and ground terminal]	1500	1500	1500
Insulation resistance (MΩ) [DC.500V, 1min/between terminal and ground terminal]	100min.	100min.	100min.
Leakage current (mA) [250V • 60Hz]	0.01max.	0.01max.	0.01max.
DC resistance (mΩ)	150max.	100max.	70max.
Operating temperature range (°C)[Including self-temperature rise]	-25 to +85	-25 to +85	-25 to +85
With derating over(°C)	55	55	55
Temperature rise (°C)	30max.	30max.	30max.
Attenuation frequency range (MHz) [+5 to +35° C]	Differential mode 0.6 to 8[20dB]	0.6 to 10[20dB]	0.6 to 10[15dB]
	Common mode 0.4 to 4[20dB]	0.8 to 4[20dB]	1 to 20[10dB]
Weight (g)	76	76	76

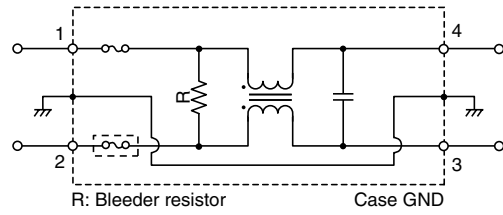
- Conformity to RoHS Directive: This means that, in conformity with EU Directive 2002/95/EC, lead, cadmium, mercury, hexavalent chromium, and specific bromine-based flame retardants, PBB and PBDE, have not been used, except for exempted applications.

- All specifications are subject to change without notice.

TYPICAL ELECTRICAL CHARACTERISTICS
ATTENUATION vs. FREQUENCY CHARACTERISTICS
ZUB2203U-22/D-22



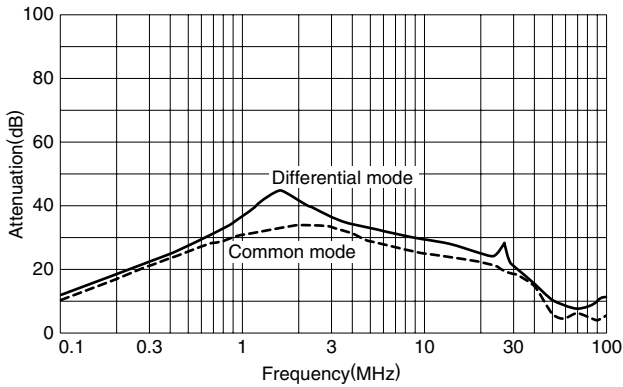
CIRCUIT DIAGRAM



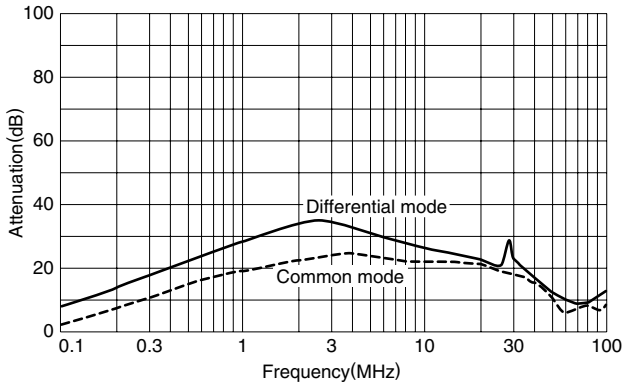
- R: Bleeder resistor
- Case GND
- The U type lacks a fuse within the circuit region indicated by the dashed line.

韦瑞电子
 电话:0755-83233025
<http://www.very-tec.com>

ZUB2206U-22/D-22



ZUB2210U-22/D-22



韦瑞电子
 电话:0755-83233025
<http://www.very-tec.com>

• Faston® is a registered trademark of Tyco Electronics AMP Corp. Incorporated.

• All specifications are subject to change without notice.